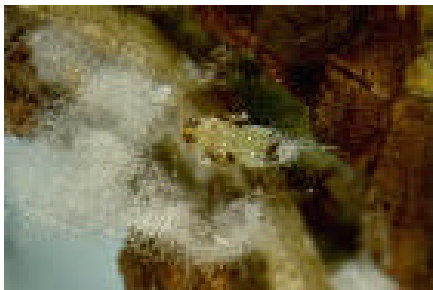
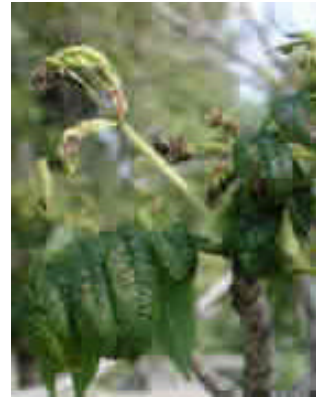


Cottony Psyllid (*Psyllopsis Discepanis*)

Cottony Psyllid is a European insect that was first noticed in the Edmonton area in 2000. Not much is known about the insect at present. It is most severe on trees undergoing drought stress. The trees infested are Black Ash, Manchurian Ash and their crosses. The insect damages the tree by sucking sap out of the leaves and by causing the leaves to curl tightly.



Control of this insect is difficult due to the nature of the insect and the protection the curled leaves provide. The life cycle of this pest is not yet well understood which adds difficulty for control or eradication.

Firstly it is important to be certain that what you are looking at is actually cottony psyllid. Leaf edges of your Black or Manchurian ash will be very tightly curled and when uncurled you will find cottony fluff and small grey/brown insects resembling aphids. Do not confuse with the Ash Leaf-Cone Roller.



What you can do:

1. Keep your trees as healthy as possible. We have been in drought conditions for two years now and you need to make sure that the trees have enough water and nutrients to thrive. Large ash trees require approximately 20 gallons of water per trunk diameter inch per week in hot weather. This is assuming that the tree is in a location with adequate drainage so the water does not pool. Trees established for 4-5 years or more can benefit from the use of deep-root watering. Slow release, non-burning fertilizer is one method of nutrient application, or leaf tree fertilizer (20-20-20 or 20-20-30) can be given every two weeks until the middle of July.
2. Insecticidal soap, used according to the label, is an effective product to reduce the numbers of cottony psyllids, as it will break the surface tension of the water and spread it inside the curl to contact the insects. Good control has been observed using this method and is currently the preferred choice. Two other chemicals are registered for use on psyllids: Carbaryl (Sevin) and Oxydemeton-methyl (Latox). Latox is a systemic insecticide and is not recommended as it has been observed to cause additional stress to the tree.
3. Dormant oils have been observed to give good control when applied correctly. A control sheet using this method will be made available shortly.